

Press release | January 2026

## Maria Lassnig and Edvard Munch Flow of Paint = Flow of Life

27 March to 30 August 2026

Press conference: Thursday, 26 March 2026, 11 a.m.

Opening: Thursday, 26 March 2026, 7 p.m.

The Hamburger Kunsthalle is for the first time showing works by Austrian artist Maria Lassnig (1919–2014) and Norwegian painter Edvard Munch (1863–1944) in a major double exhibition. Although separated by half a century, a closer look at the two artists reveals astonishing parallels that make it possible to trace Munch's influence on Lassnig's oeuvre and, conversely, to discover new aspects in the work of her predecessor. Furthermore, the works on view offer an intimate glimpse of the two artists' biographies while painting a multifaceted picture of the period in which they lived. Munch and Lassnig not only shared an idiosyncratic handling of colour as an expressive element; intriguing similarities can also be seen in their lively brushwork and free-form experimentation with painting techniques. Under their artistic gaze, subtle sensations and unique levels of perception are transformed into a new type of imagery. Inner and outer worlds interact to create a keenly felt emotional tension that holds the viewer in its thrall. While Munch focused on major emotions – grief, despair, anxiety, anger, joy – Lassnig devoted herself in particular to physical sensibilities.

The exhibition is being mounted in cooperation with the Kunsthhaus Zürich as a collaboration with the Maria Lassnig Foundation in Vienna and the Munchmuseet in Oslo. The extensive show will comprise from 180 to 200 works on loan from international museums and private collections. Paintings, works on paper, sculptures, films and photographs will be presented on two floors of the Galerie der Gegenwart.

Curators: Dr. Brigitte Kölle (Hamburger Kunsthalle); Dr. Sandra Gianfreda (Kunsthhaus Zürich); Guest Curator: Prof. Dr. Hans Dieter Huber | Assistant Curator: Dr. Johanna Hornauer

An exhibition of the Hamburger Kunsthalle and the Kunsthhaus Zürich.

In cooperation with:

**Maria  
Lassnig  
Stiftung** **MUNCH**

Sponsored by:

**FREUNDE DER  
KUNSTHALLE**

franz dieter  
und michaela **kaldewei**  
**kulturstiftung**

**ART FOUNDATION  
MENTOR LUCERNE**

**LAND KÄRNTEN**  
Kunst und Kultur

**KARIN UND  
UWE HOLLWEG  
STIFTUNG**

**Bundesministerium  
Wohnen, Kunst, Kultur,  
Medien und Sport**

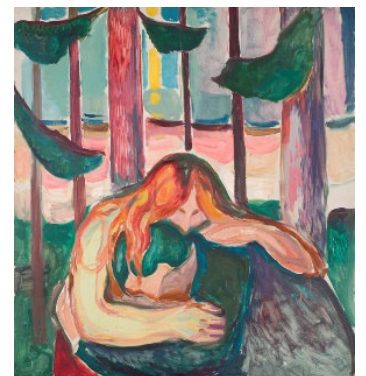


Christine und Heinz Lehmann

**Hamburg** | Behörde für  
Kultur und Medien



**Maria Lassnig** (1919–2014)  
*Married Couple*, 2001  
Oil on canvas, 100 x 125 cm  
Städtische Galerie im Lenbachhaus  
and Kunstbau Munich, KiCo Collection  
© Maria Lassnig Foundation / VG  
Bild-Kunst, Bonn 2026



**Edvard Munch** (1863–1944)  
*Vampire in the Forest*, 1916–1918  
Oil on canvas, 149 x 137 cm  
Munchmuseet  
© Munchmuseet

### MIRA FORTE

Press Spokeswoman &  
Head of Press and Public Relations

Hamburger Kunsthalle  
Stiftung öffentlichen Rechts

Glockengießerwall 5  
20095 Hamburg

T +49-(0)40-428131-204

presse@hamburger-kunsthalle.de  
www.hamburger-kunsthalle.de